



NATIONAL REPORT SLOVENIA

XXI. MBSHC

Cadiz, 11. – 13. 6.2019

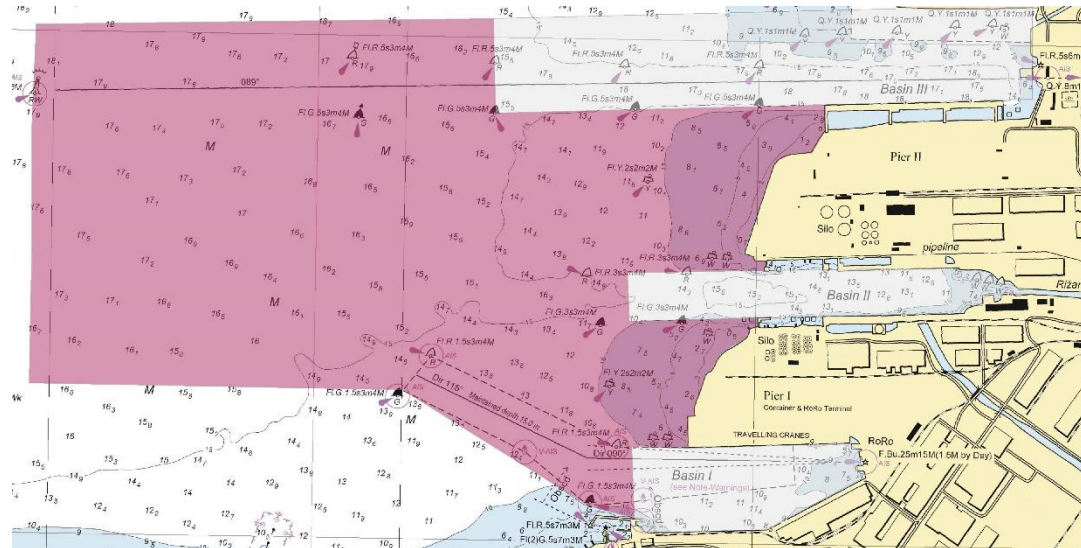
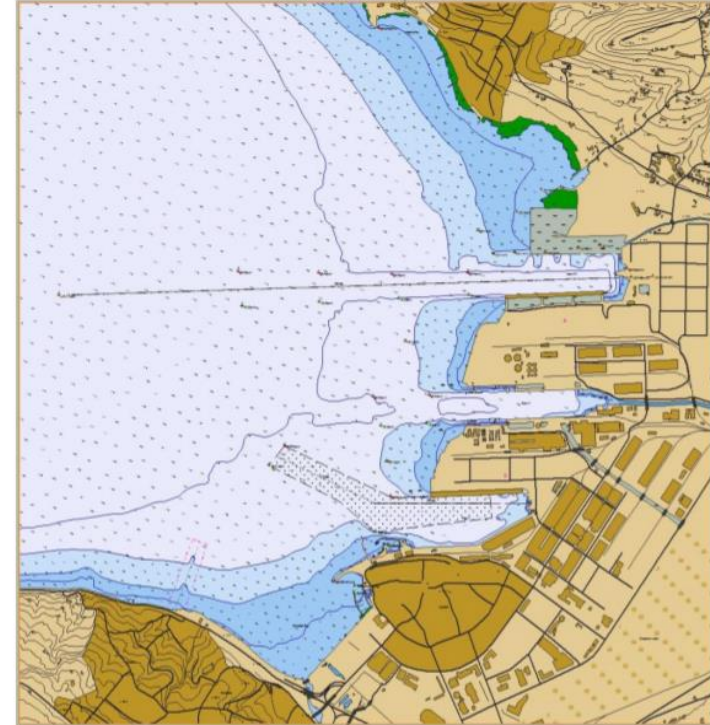
Administration

- Ministry of Infrastructure, Maritime division = HO
change of Head of division – P-5 update
- Geodetic Institute of Slovenia – expert and technical support for HO

ENC chart

- New extended edition with new anchorage areas for Port of Koper is scheduled in July 2019
- Port makes own survey
- Survey of approach channels

SI ENC cell: SI500001



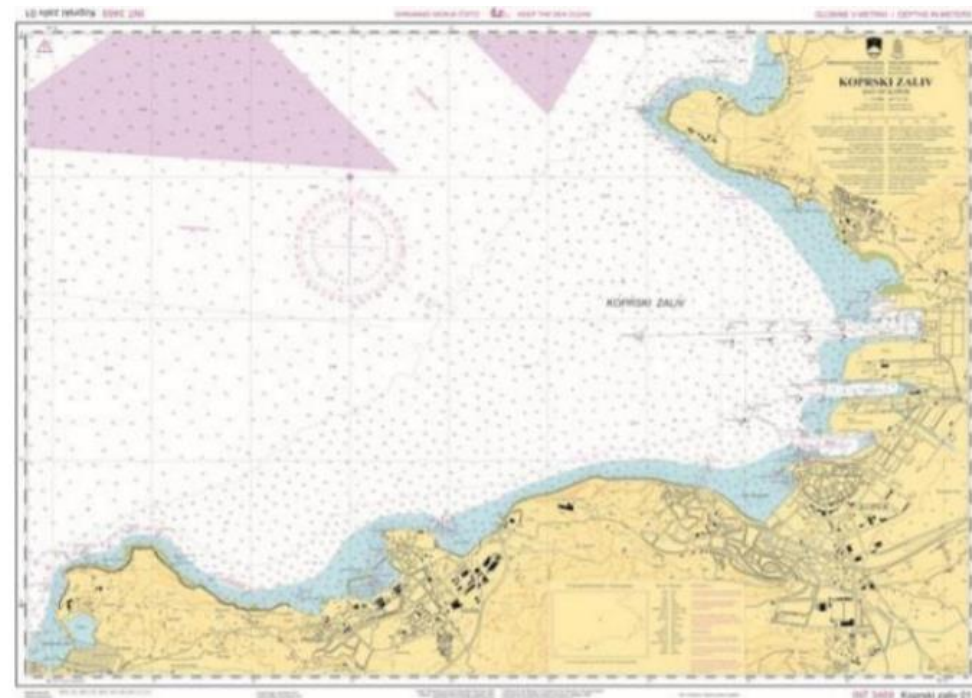
Paper charts

New editions of charts in 2018:

- Gulf of Trieste, scale 1:80.000
- Piran Bay, scale 1:15.000

Scheduled new editions in this year:

- Koper Bay – INT 3469, scale 1:15.000
- Port of Koper, scale 1:4.000



Capacity building

- Caris Base Editor training – NL 2017
- Caris HIPS&SIPS training – SI 2019

- IC-ENC International ENC validation Training Course, Italy 2019
- Cat B Cartographic Course – UK 2019

Project cooperation

- High resolution mapping EASME/EMFF/2016/005
- EMODnet Bathymetry – High resolution seabed mapping EASME/EMFF/2019/007